

# FOTPRINTS

THE STRING CHEESE INCIDENT.COM

CREATING A  
CONSCIOUS  
CONCERT  
COMMUNITY

## 2014 YEAR IN REVIEW

The String Cheese Incident celebrated 20 years as a band in 2014, and one may argue that it was one of their best years to date! When it's all said and done, SCI will have brought us over 40 Incidents, in 18 different states and 2 countries, 10 festival appearances, and a brand new studio album. Top notch musicianship, well matched collaborations, and fresh setlists were a theme at many shows, and the band has showed a renewed sense of passion while playing for fans old and new.

One of SCI's biggest accomplishments of 2014 was the release of their first studio album in over 7 years. The band teamed up with producer Jerry Harrison (Talking Heads) to create "Song In My Head", a 10 track album of all SCI originals, including fan favorites like "Colorado Bluebird Sky" and "Rosie". The album charted at #1 on the Relix/Jambands.com radio chart for several weeks, and continues to gain positive reviews by both media and fans alike.

Other musical milestones this year included the long awaited revival of an "International Incident", which took place in Mexico's Rivera Maya, 3 sold out nights at the beautiful Fox Theatre in Oakland, and a free hometown show in Boulder, CO, that packed over 10,000 fans onto "The Hill" for an unprecedented Incident that has already gone down in String Cheese (and Boulder) history.

The Barefoot Boys were all over the festival circuit in 2014, bringing Incidents to New Orleans' JazzFest, DelFest, Wakarusa, Huck Finn Jubilee, Electric Forest, LOCKN' and more! The band also returned to Florida for another Suwannee Hulaween before heading up the East Coast for a 14 show tour that included stops at the historic Capitol Theatre in New York and the State Theatre in Portland, Maine. Many fans have praised the band for their diverse and energetic setlists during the Fall Tour.



Photo: © Richele Cole

And now here we are.... ringing in a new year with SCI once again. The band is thrilled to be spending their third New Year's Eve in a row with another #HometownThrowdown in Colorado at the 1STBANK Center. Whether you hit the road with SCI for a whole tour this year, did a run of shows in your favorite city, or are just now catching the boys right here in Colorado, thank you for being a part of an incredible year with The String Cheese Incident! Happy New Year!

## SCI NEW YEARS PREVIEW

**DOORS:** 7:00 PM **SHOW:** 8:00 PM

**SEATING:** GA Floor / GA Bowl **HULA HOOPS:** Yes

**WATER:** Factory sealed and empty reusable water bottles are allowed.

**PARKING:** There are several parking lots and garages located around 1STBANK Center. Parking fees may apply.

**PUBLIC TRANSIT:** 1STBANK Center is very accessible by public transportation from both Denver and Boulder, with an RTD stop located just feet from the front doors. For more info, please visit [www.RTD-Denver.com](http://www.RTD-Denver.com).

**DOWNLOAD THESE SHOWS & MORE AT  
[LIVECHEESE.COM](http://LIVECHEESE.COM)**



## CONSCIOUS ALLIANCE

art that feeds

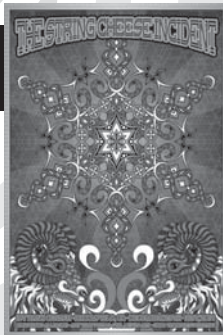
The String Cheese Incident will once again team up with Conscious Alliance to host another 'Art That Feeds' Food Drive at the SCI's NYE run at the 1STBANK Center in Broomfield, CO on December 29, 30 & 31.

Phil Lewis will be creating a limited edition screen print for this very special New Year's Eve run. The poster will be available to the first 600 patrons who donate 20 non-perishable food items to the Food Drive. Monetary donations will also be accepted for the poster! Thank you for your support!

[CONSCIOUSALLIANCE.ORG](http://CONSCIOUSALLIANCE.ORG)

**THE STRING CHEESE INCIDENT  
NEW YEARS FOOD DRIVE**

FREE LIMITED-EDITION POSTER  
WITH DONATION OF 20 NON-PERISHABLE FOOD ITEMS



# Q+A WITH THE STRING CHEESE INCIDENT YOU ASKED... THEY ANSWERED

**How do you pick new covers to try out for the first time?** - Alyssa N.

**KEITH MOSELEY:** Lots of times the covers are determined by the specific set we play. For example, the Lunar Landing Conspiracy set was comprised of songs with moon themes or "moon" in the title. The Hulaween set was all about the afterlife this year and included songs like "Stairway to Heaven" and "Live and Let Die". When we work a cover into our regular set and we haven't played it before, it is simply something that one of us brings in as a suggestion of something fun to play. It might be an old classic, or something new and hip requested by one of our kids. The hard part is getting a majority vote from the other band members!

**Favorite type of cheese?**

Fresh Parmesan



**What is your set break ritual?** - Dave K.

**MICHAEL KANG:** My set break ritual is something I started to do every show after we played The Shrine in LA for Halloween many years ago. Our tour manager at the time, Chewy, went out into the streets and found some virgins who were willing to sacrifice themselves in the name of rock and roll. So, I usually have the venue paint a mandala on the ground for us to be able to perform a good ole' human sacrifice. We have been doing it for so long that its really just second nature and we don't leave too much of a mess. The rest of the guys in the band were hesitant to join in at first, but they eventually saw that it was really no big deal. However... when we don't have enough time at set break to get really into the ritual of it all, I simply make myself another cocktail, eat some potato chips or tamari almonds take a quick leak and head back onto the stage.

**Favorite type of cheese?**

Hmmm, tough question... the last really memorable cheese I had was a rosemary crusted Asiago. Really good by itself or grated onto pasta or pizza.



**What has your favorite show or moment of 2014 been?** - Lady K.

**JASON HANN:** There are so many standout musical moments from this past year. If there was a certain moment from stage that really had an impact on me, it was at Hulaween this year. We did these hits during the song "Live and Let Die" and the pyros went off at the right moment. Ha. I had seen lots of Paul McCartney videos of that moment when he does that song, and to feel like we hit that moment in the same way, was a super thrill.

**Favorite type of cheese?**

I'm lactose intolerant but I can have small amounts of cheese before I start hurting. My favorite cheese in this case would be the type of cheese in a good SCI Fi "B" movie. The first "Sharknado" movie was great cheese. "Sharknado 2: The Second One" was bad cheese, but it had a better title.



**If you could jam with anyone who you haven't gotten the chance to, who would it be?** - David S.

**BILLY NERSHI:** I've been wanting to get a chance to play with Peter Frampton. His songs are so iconic and seeing his recent performances he seems to be as vibrant as ever. Of course I'm pretty fired about the upcoming Doobie Incident. They are on top of their game, have a huge catalogue of hits and our buddy John Cowan (New Grass Revival) is playing bass and singing with them. KILLER!

**Favorite type of cheese?**

I love Jarlsberg on a good water cracker with smoked salmon on top!



**Do you coordinate your own outfits or do you have professionals to do that? You are one stylish guy.** - Josh L.

**KYLE HOLLINGSWORTH:** Why thank you! Yes, at times I feel stylish or more so ridiculous. No, I do not have a fashion consultant, I make up my own combinations based on whats clean and available... But I do have a cat shirt for every day of the week.

**Favorite type of cheese?**

I don't often eat cheese, but when I do there is only one that matters: Velveta.



**What job did you quit to join the band?** - Francesca L.

**MICHAEL TRAVIS:** I was working for the Forest Service in Washington and Oregon, and part of my job was to climb up to the tops of huge trees, like over 50 feet in the air, and blow off the top of the tree to create nests for woodpeckers and other wildlife. Not the worst job I've ever had, but yea...

**Favorite type of cheese?**

String...duh!



## HELP KEEP THE SCENE CLEAN!

Please be respectful to your fellow fans & venue employees by picking up after yourself inside the show. Thank you!



## QUESTIONS? COMMENTS? SUBMISSIONS?

SEND AN EMAIL TO: [FOOTPRINTS@STRINGCHEESEINCIDENT.COM](mailto:FOOTPRINTS@STRINGCHEESEINCIDENT.COM)

> E-mail us those questions you've always wanted to ask the band. We'll publish a few answers in future issues of the FOOTPRINTS Newsletter.

> If you feel inclined to write a cohesive and captivating story about your most memorable experience with SCI and would like to be featured in our "Just One Story" section, please send us an email and we'll consider printing it in our next issue.

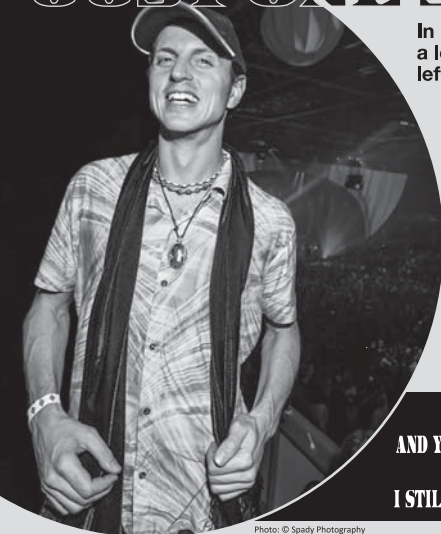
By submitting your writing, you give the SCI Organization permission to publish your work in the FOOTPRINTS Newsletter, both online and printed copy. FOOTPRINTS Newsletter is published by The String Cheese Incident and Madison House Inc. with the help of Conscious Alliance.

## FRIENDS OF CHEESE

[livecheese.com](http://livecheese.com)  
[madisonhouse.com](http://madisonhouse.com)  
[scifidelity.com](http://scifidelity.com)  
[consciousalliance.org](http://consciousalliance.org)  
[rocktheearth.org](http://rocktheearth.org)

[friendsofcheese.com](http://friendsofcheese.com)  
[scijellyfish.org](http://scijellyfish.org)  
[blackspymarketing.com](http://blackspymarketing.com)  
[madisonhousepresents.com](http://madisonhousepresents.com)  
[madisonhousedesign.com](http://madisonhousedesign.com)

# JUST ONE STORY



In Memory of Ted Welles -  
a longtime fan of SCI who  
left us earlier this year.

**Name:**  
Ted Welles  
AKA "Nice Guy Ted"

**Location:**  
Everywhere

**First SCI Show:**  
December 29th, 2000  
Oregon Convention Center  
Portland, OR

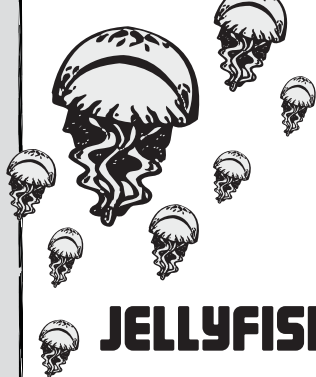
**Favorite venue to see SCI:**  
Hornings Hideout

**Favorite Cheese song:**  
Pack It Up

**ROOTS RUN DEEP  
AND YOU RAN FASTER THAN THE WIND  
ROOTS RUN DEEP  
I STILL FEEL ALL THE LOVE YOU SEND**

Photo: © Spady Photography

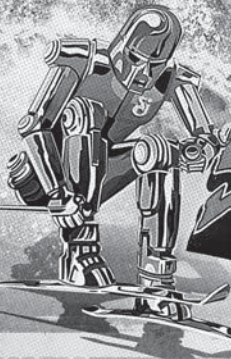
Nice Guy Ted always had a smile and kind word for a fellow Friend of Cheese. You could count on him for an honest opinion of the band's performance, so you knew when Ted was stoked, it was a truly amazing show! Often you could find him running the "Bead for Life" booth on tour with SCI. Ted was lucky enough to see over 200 String Cheese Incidents all over the world, including Japan, Canada, Hawaii. His other passions included skiing, playing the drums and being a great friend. Ted began a tradition of passing out small smiley face stickers at String Cheese shows. It was Ted's way of making a simple connection with others as well as spreading his Love. He will be truly missed by the SCI Family for years to come. RIP Teddy.



## JELLYFISH

THE JELLYFISH are a group of men and women who choose to experience String Cheese Incident shows without the use of drugs or alcohol. Our primary purpose is to provide a safe environment for clean & sober incidentalists. We are not affiliated with AA, NA, or any other 12 step program. Nor, are we affiliated with The String Cheese Incident. We are a group of people who share the common bond of enjoying musical events while choosing to remain clean and sober "One Incident at a Time".

Keep an eye out for The Jellyfish table. More info is available at:  
[www.SCIjellyfish.org](http://www.SCIjellyfish.org).



# THE STRING CHEESE INCIDENT

# WINTER CARNIVAL 2015

## JANUARY

16-17 - PARAMOUNT THEATRE.....SEATTLE, WA

18-19 - MCDONALD THEATRE.....EUGENE, OR

21-22 - KNITTING FACTORY.....BOISE, ID

23-24 - GRAND SIERRA RESORT.....RENO, NV

29-31 - ARAGON BALLROOM.....CHICAGO, IL

## FEBRUARY

13-15 - BROOKLYN BOWL VEGAS.....LAS VEGAS, NV

**FOR MORE INFO: STRINGCHEESEINCIDENT.COM**



# SCI FIDELITY RECORDS

Coming In  
2015



## THE STRING CHEESE INCIDENT RHYTHM OF THE ROAD - VOLUME 2

For this installment, we'll revisit the blazing hot year of 2001. We've re-mixed and re-mastered from the original multi-track tapes, and the result is a must hear show for any fan of SCI!



## OUT NOW ON SCI FIDELITY RECORDS



**THE STRING CHEESE INCIDENT  
SONG IN MY HEAD**  
Highly acclaimed studio release from SCI, produced by Jerry Harrison of Talking Heads. Available in 180 Gram Vinyl!



**KYLE HOLLINGSWORTH  
SPEED OF LIFE**  
Brand new solo album from Kyle Hollingsworth featuring members of The Motet, Big Gigantic, Elephant Reval & more!



**SCI FIDELITY RECORDS  
15TH ANNIVERSARY SAMPLER**  
Thirty of the best songs from some of the label's most acclaimed albums.  
**FREE DOWNLOAD!**



**LOTUS  
BUILD**  
With a foundation of beats evoking vinyl breaks, house, and big-beat, Lotus has crafted an album that propels through ten tracks with no wasted moments.

**THE STRING CHEESE INCIDENT RECORDING POLICY:** SCI supports and encourages the audio recording of most shows. Festival performances may be subject to different recording policies. Please make note that taping is only allowed in designated taping areas (usually located behind the soundboard). Space in the taper-section is limited and access policies vary from venue to venue. In most cases, the venue will provide the necessary equipment for taping. TAPER TICKETS can be purchased only at [SciTicketing.com](http://SciTicketing.com) or by calling 303.444.5875. In the case that the venue is entirely general admission, or that the floor is general admission, tapers are allowed into the venue on a first come, first serve basis. When the section is full, no additional recording equipment will be allowed into the show. Sorry, but anyone found taping in violation of the above policy will be removed from the venue. For more in depth information on our taping policy and for details regarding specific shows, visit [stringcheeseincident.com](http://stringcheeseincident.com).

S C N E C R M R I D X K C M Y  
T F O A C F O N Z H N I B M X  
N Y Q L G N C S D X K H L L R  
I A D X O I A D I E M S A Y H  
R A C W D R N R P E K R C H I  
P E Y E E S A A T J S E K B K  
T F N O M O S D L R S N S K O  
O T E Z E I X Y O S E L P A Z  
O D M Q V H V X A Z J V Y N J  
F E P A O B O R K M K N I G X  
H T R O W S G N I L L O H R K  
W T T H Q E C O L L I D I N G  
A R A P U Y E L E S O M N J A  
O N U L B K E W R Q U E S O J  
N Y B T O G X I S L Z N Y Q A

## SCI WORD SEARCH

FOOTPRINTS  
QUESO  
NERSHI  
MOSELEY  
TRAVIS  
KANG  
HANN  
HOLLINGSWORTH  
BLUEGRASS  
ROSIE  
COLLIDING  
COLORADO  
INCIDENT  
RIVERTRANCE